

You'll find a number of striking **features and benefits** on our dishwashers.



EcoSense

Because sensors constantly fine tune the temperature of the water, note when it is dirty (and needs changing), and even let you know when more salt is needed, they guarantee low water and energy consumption. And, although the dishwasher will automatically get on with the job, you can always tailor the programme to a specific need.



Even the door is precision designed

The clever design of the door catch and precision engineering of the spring pressure means that the door can be securely closed with the minimum of effort allowing for virtually automatic door closing.

Ensuring the right conditions

All Siemens dishwashers use salt refill sensors to assess the level of dishwashing salt and tell you, via LED lights, when the salt compartment needs to be re-filled. For optimum care of your dishwasher we always recommend the use of salt, even if you are using a combination detergent.

Eco option

All Siemens dishwashers (except Zeolith models) are now up to 50% faster by default. However for those of us who are not in a hurry or can put the dishwasher on overnight, the 'eco option' can be selected slowing the programme duration down and offering 'A' rated energy results.

Just the right temperature, every time

Whether it's hot water for heavily soiled pots and pans, or cool for delicate glass, the precision temperature – not a degree more, not a degree less is guaranteed by the hi-precision temperature sensor.

Sound engineered

Extensive sound research is carried out in a special laboratory to identify noise levels, their acceptability to the 'ear' and the impression they make. This research is then applied to all Siemens dishwashers to reduce noise levels by thorough sound reducing materials, extensive insulation and quality components. This means it is quiet enough to use whilst you are still entertaining.

Half load

No need to wait for a full load, the half load option does what it says, washing half a load with no restrictions of where to stack your dishes, plus it saves up to 20% in water and 10% in energy whilst maintaining an 'A' rated wash performance. Perfect for smaller households or when you are in a hurry.



Faster by design

More and more dishwasher owners are demanding clean dishes but in less time. Because of this we have introduced varioSpeed to our range of Zeolith dishwashers that will save up to 50% of wash time. Just press the varioSpeed button in conjunction with your desired programme and it will run in half the time without compromising on quality. That's clean and dry in half the time.



And there's more. Surprisingly more.



Quick reference guide

At Siemens, we have spotted the fact that people tend not to refer to instruction manuals, instead we all tend to use the same programme again and again whatever the contents, sometimes not always achieving the results we want. Soiling is always different, so your programme choice should vary depending on the item being washed. To overcome all this, Siemens freestanding dishwashers now have a quick reference guide on the top edge of the door to help you select the perfect programme for the contents of your dishwasher.

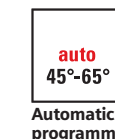


Large item spray head

Larger items such as baking trays and oven shelves can be washed simply by removing the upper basket and attaching the large item spray head.

Auto daily programme: for perfect results every time

With the auto daily programme, the hydroSensor monitors the cleanliness and volume of the water and keeps it between the ideal temperatures of 45°C and 65°C for perfect cleaning, while using as little water and energy as possible.



Intelligent, reliable and quiet

Our dishwashers combine stylish design with excellent performance. They can handle virtually all the crockery and cutlery you can throw at them, even long stemmed wine glasses and, at the end of the cycle, gives you your dishes in pristine, sparkling condition.

Quick wash 45°C

The quick wash 45°C programme cleans all your dishes in a record 29 minutes, and with a half-load, the results are even more impressive.



hydroDry energy saving feature

This is a perfect example of the intelligent design that is incorporated into our dishwashers. It uses the heat generated in the main wash cavity to pre-heat stored water that's used later in the wash cycle. In the final rinse, the hydroDry cleverly uses changes in temperature to leave the dishes hygienically dry, thus removing the need to take air in from outside the machine. hydroDry is highly recommended for delicate handling of your glassware.

For dishes that gleam

The rinse aid sensor is essential for a sparkling finish for dishes and glasses. All Siemens dishwashers assess the level of rinse aid and tell you, via LED lights, when the rinse aid compartment needs to be re-filled. If you are using a combination detergent which will include rinse aid then the sensor will automatically turn itself off.

Residual drying

This uses the residual heat in the crockery from the final rinse to dry the dishes naturally and hygienically.

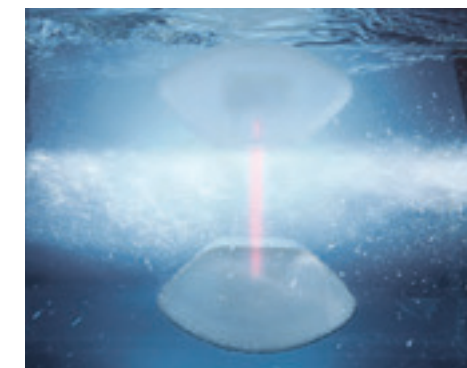


Like everything we build, our dishwashers profit from the best technology and the latest innovations.



Perfect control of your wash

hydroSensor checks how dirty the water is after the pre-wash cycle and then sets the appropriate temperature for the main wash. It will also decide if the water can be used again for the main wash saving as much as 4 litres of water.



A more efficient spray

In Siemens dishwashers, a system of alternately rotating spray arms to the upper and lower baskets ensures that water and energy are used efficiently. What's more, the curved spray arms have been fitted with holes pierced at various angles to direct water to all areas of the internal cavity.

loadSensor

The loadSensor notices the slightest change in the amount of water running through the machine. Any perceived loss in water (due to putting a cup in the wrong way round, for instance) and the sensor compensates, ensuring that the optimal amount of water is being used at any one time. Even better, because the loadSensor makes sure that the pump always operates at exactly the right speed for the volume of water, no air is sucked in and the pump operates quietly. Siemens dishwashers with loadSensor run with very little noise at all.

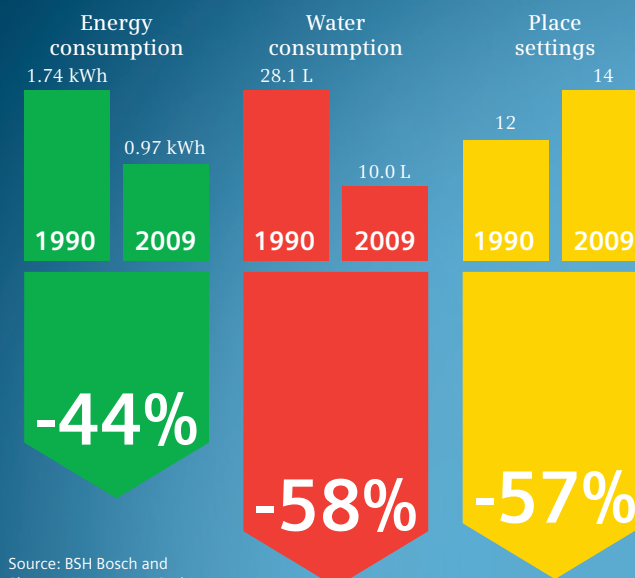
hydroVario

This is unique to Siemens. Using the technology of the hydroSensor and the pump, the dishwasher automatically regulates the pressure from the spray arms according to the soiling of the wash load and the programme you have selected. For delicate china and glass the spray arm pressure is lowered and the revolutions of the spray arm slowed down enabling delicate handling of the wash load whilst still maintaining an 'A' wash performance. For an intensive wash this process is reversed where more pressure and a hotter wash is required to clean stubborn stains.



Reducing consumption for dishwashers up until 2009.

Thanks to Zeolith drying, Siemens dishwashers take a mere 125 minutes to complete the regular cycle. This makes them, by some distance, the fastest in the world. Even better, the energy consumption is just 0.97 kWh and, despite the seriously quick wash time, the results remain as good as you would expect from a Siemens.

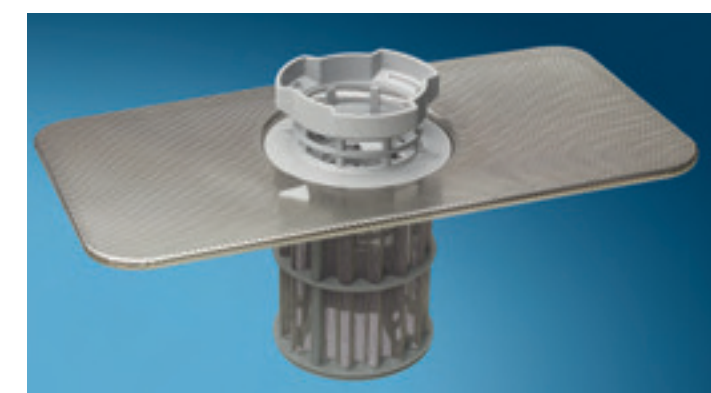


Source: BSH Bosch and Siemens Hausgerate GmbH

Three plus filter system

Our easy to remove and clean filter system comes in three parts: A fine micro-filter, fine filter and coarse filter.

With 50% more surface area between them, they allow up to 15% more water to circulate through the system. These extra 12 litres have the cleaning power of over 50 baths of water.



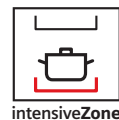
How much extra can we pack in? Introducing the varioDrawer.

The varioDrawer is an additional loading level that offers a great deal more flexibility. Unlike most ordinary cutlery drawers, its specially designed shape provides room for not only cutlery, but also soup ladles, salad servers and small delicate items like espresso cups. Even better, as you no longer need a cutlery basket on the lower rack, it means you can now load up to 14 place settings with a Siemens dishwasher that has a varioDrawer.



Gentle when it matters and power where you need it. Welcome to the intensiveZone.

How do you clean heavily soiled saucepans and fragile glasses at the same time? Until we invented the intensiveZone option, you didn't. Whatever programme you've selected, with intensiveZone the items in the lower rack are subjected to 20% more spray pressure at a higher temperature, (which is great for burnt on food and stubborn stains). Whilst on the upper rack, the programme you have selected stays unaffected and delicate items like long stemmed wine glasses are washed gently and carefully.



delicate



intensive



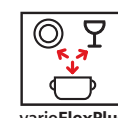
RackMatic™

With RackMatic™, the height of the top basket can be adjusted to 3 different levels, at spaces of 2.5cm and 5cm, which offers flexible loading of different types and sizes of plates, glasses and other dishes, even when fully loaded.



varioFlex Plus basket system. Maximum flexibility for your pots and pans, dishes, glasses and cutlery.

varioFlex Plus is an innovative and premium racking system that offers remarkably new levels of comfort and flexibility when loading the upper and lower baskets. A superb glass rack design, for example, lets you stack up to 12 wine glasses in the lower basket and up to 6 on the upper. What's more, up to 6 rows of prongs can be folded in both the upper and lower baskets to make extra room for pots and pans. And since the depth of the baskets has been increased by 4cm, there is now room for 13 rather than 12 place settings. Combine this with the varioDrawer models, and you can achieve 14 place settings.



Automatic detergent aware

Whatever detergent type you may want to use, your dishwasher will automatically adjust the cycle ensuring that you always get the best possible results. In fact, there's no need to select a detergent type at all with a Siemens dishwasher.



Nothing can bring out the full power of the detergent like dosageAssist.

These days, tabs are the most commonly used form of detergents for dishwashers. But because most dishwashers have been designed to make the best use of powders, gels or liquids, tabs tend to fall straight into the main body of the washer and so can't work at their most effective. This has all changed with the creation of our unique dosageAssist idea. The tab falls from the detergent chamber into a small catch pan at the front of the upper basket. Once it's inside, a precisely aimed jet of water dissolves it and then helps distribute it evenly around the entire machine for the best dishwashing results every time. And of course, dosageAssist works just as well with powders, gels or liquid detergents.



If it's good enough for Mother Nature, it's good enough for our dishwashers.

Because Siemens engineers are always trying to make our machines just that little bit better, we've achieved a worldwide reputation for the highest standards of technology and performance.

This time, however, the breakthrough is down to nature not nurture.

Our new drying technology makes use of Zeolith, a class of silicate minerals whose astonishing ability to absorb water molecules and then release them as energy helps dry your dishes quicker and makes the dishwasher more energy-efficient.

1. Drying cycle

Water evaporates from the hot dishes at the end of the final rinse. The wet hot air is taken out of the interior and is guided through the Zeolith container. The humidity is then absorbed and energy is released from the Zeolith. The hot dry air is then guided back into the interior to dry the dishes.



2. Cleaning cycle

During the next cleaning cycle, as the Zeolith mineral heats up, it starts acting like a sponge once more ready to start the next drying phase.



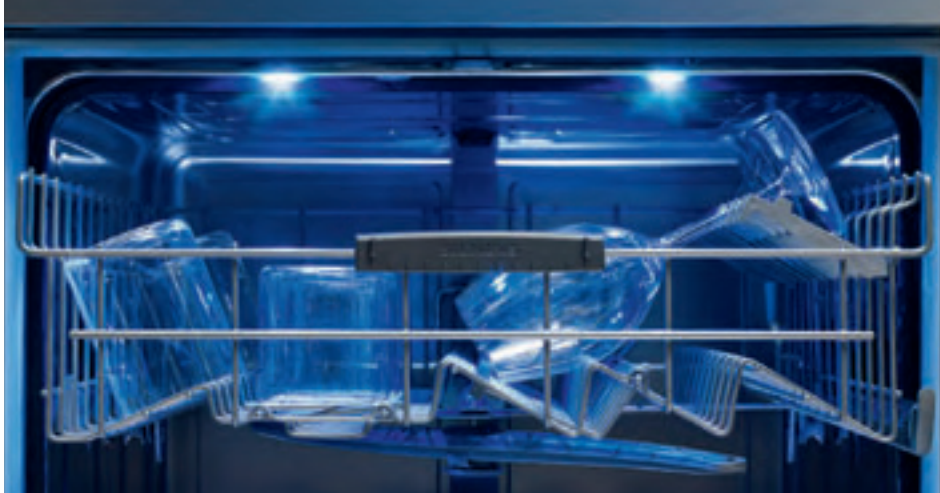
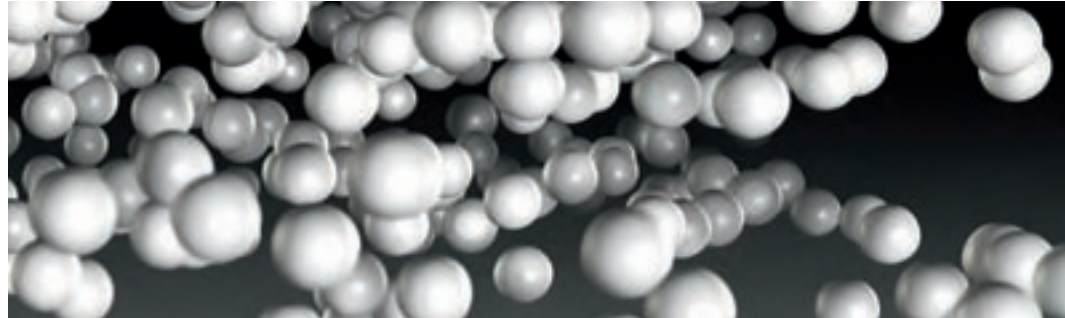
A Siemens dishwasher is fast. A Siemens dishwasher with Zeolith drying breaks world speed records.

Thanks to Zeolith drying, Siemens dishwashers take a mere 125 minutes to complete the regular cycle. This makes them, by some distance, the fastest in the world. Even better, the energy consumption is just 0.97 kWh and, despite the seriously quick wash time, the results remain as good as you would expect from a Siemens (energy label AAA).



Long-term drying

Zeolith's unique abilities don't wear off. The mineral (which is stored safely in the depths of the dishwasher) lasts for the entire lifespan of the machine.



Blue emotionLight

Introducing a cool blue emotionLight to the interior of our top of the range Zeolith models.



A Siemens dishwasher with Zeolith drying breaks world speed records.

Zeolith is a naturally occurring mineral and has the ability to absorb moisture and convert it into energy. The result is faster drying combined with lower energy consumption.

Thanks to Zeolith drying our dishwashers take a mere 125 minutes to complete the regular cycle with energy consumption down to a mere 0.97 kWh.

Dishes dry in record time: Zeolith® drying

Scenario	Time (minutes)	Energy (kWh)
Siemens without Zeolith® drying	140	1.05
Siemens with Zeolith® drying	125	0.97
with Siemens Zeolith® drying, energySave button activated	140	0.83

Based on: Eco 50°C standard programme

High-pressure cleaning and savings at the touch of a button: energySave

If you select the energySave option, the dishwasher's energy consumption is reduced still further from 0.97 kWh to an unbeatable 0.83 kWh, with no loss of performance.

15% saving

At Siemens, quality, safety and the environment are paramount.



Testing and life expectancy

All machines are tested for 20 minutes before leaving the factory. They are tested for safety, function and noise. A percentage of dishwashers are selected and are kept continuously on test in our factory for 24 hours a day on 50°C programme for up to 2,200 washes – that’s equivalent to 10 years usage. This means you can be assured that your Siemens dishwasher is not only built to last but will continue to do its job perfectly for many years to come.



hydroSafe – even when the dishwasher is turned off

Using the hydroSafe device, Siemens dishwashers are guaranteed to be 100% leak proof 24 hours a day. If ever a leak occurs, the sensor shuts down the machine immediately. hydroSafe features on the majority of Siemens dishwashers.



‘A’ energy, wash and dry performance

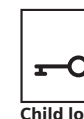
All dishwashers have to display an energy efficiency label. The aim of this is to offer consumers a standardised method of choosing the most energy efficient appliances. Suffice to say that all Siemens dishwashers are rated ‘A’ for energy, wash and dry performance, which will ultimately save you money.

Designed to be durable and flexible

It’s not enough just to look good – all our dishwashers are designed and built to give you many years of dependable service. Every important component is tried and tested to ensure you get long-lasting quality and performance.

Child lock and tamperproof controls

Most of Siemens freestanding dishwashers include a child lock that prevents children from opening the door, and a tamperproof control panel stopping them from changing the programme during operation.



Child lock

Hygiene option

If you’re concerned about germs and bacteria, this option is ideal. During the final rinse the water temperature will be raised (depending on the chosen programme) as high as 77°C and kept there for an extra long period.

It offers hygiene performance in accordance with the US sanitation standard NSF and the German standard for professional sanitation.



Hygiene



Low water consumption

At Siemens we are constantly developing our dishwashers to reduce water consumption. That’s why most of our dishwashers can consume as little as 10 litres of water, compared to up to 60 litres if you wash up the same load by hand. The energy required to heat 63 litres of water from 15°C to 55°C is around 4.2kWh. A Siemens dishwasher uses only 1.05kWh on an eco 50°C wash programme and only 0.97kWh with a Zeolith machine.



10 L Water

Hydraulic pump

Thanks to an innovative new pump design, which uses the science of hydraulics, some of our new dishwashers now operate at a noise level of no more than 41dB, which is actually quieter than a whisper.



Whisper quiet

Haven’t I seen you somewhere before?

98% of all components in our dishwashers are recyclable.